



CITTA DI TORINO



# The New Torino Central Library and the reorganization of the Public Library System

March 31, 2023

**Stelline Conference / Convegno delle Stelline**



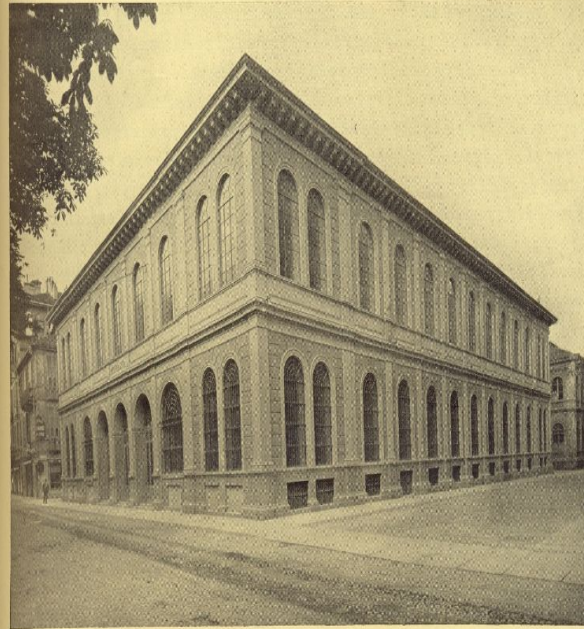
# The City and the Library





# Torino and the new Central Library

## Memory and Future



La Biblioteca Civica. L'esterno dell'edificio



# Torino, the City.

## Strategic policies of:

- proximity
- multicentric
- green transition and mobility
- networks and social impact
- opportunities
- international and interconnected
- metropolitan

Excerpt from the *Programming Document of the City of Torino*





# Public Libraries and the City.

## The International and Local Scenarios

UN 2030 Agenda for Sustainable Development 2030

The new IFLA-UNESCO Public Library Manifesto -  
Dublin 2022

“*Città che Legge*” acknowledgement (Reading City) for  
2022-2023 (Cepell)

New City of Torino *Reading Pact* 2022

Signing of the *Milan Libraries Charter* (October 2022)

UNESCO World Book Capital Network City's  
membership





Venerdì 25/02/2022  
Auditorium Museo Nazionale dell'Automobile Torino

## **Circoscrizioni al Centro (City's districts at the Centre)**

The City's project to enhance and support the cultural offerings of the City's districts and integrate them with the City's main events (Biennale Democrazia, Mito Settembre Musica, etc...).

A more rich and diversified cultural programme for the Libraries, which are at the heart of the «15-Minute City» policy.

**Projects:** Cultura di Base, Cultura dietro l'Angolo, Torino futura



# Two lines: NRRP (National Recovery and Resilience Plan) – Integrated Urban Plan and Complementary Fund

#CULTURE  
#ACCESSIBILITA'  
#INCLUSIONE  
#PARTECIPAZIONE

PIÙ  
[piano integrato urbano]



## Torino's Public Libraries

- Central Public Library
  - Music Library Andrea Della Corte
  - Intercultural Centre Library
  - 15 Branch Libraries
  - Bibliobus
  - Bela Rosin Mausoleum (The Reading Garden)
  - Two libraries at the Lorusso and Cutugno and Ferrante Aporti prisons
  - Services in hospitals, counselling centres, nursing homes
- Logistic and Collection offices

Two Reading Points  
(Cartiera and Piu' Spazio 4)

Ten partner Libraries (Maurice, Laadan, Scuola Holden, Centro studi piemontesi, Cral Unicredit ecc.)

The extended proximity network: Scholastic Libraries Network and Public Libraries Network of Metropolitan Area





#CULTURE  
#ACCESSIBILITA'  
#INCLUSIONE  
#PARTECIPAZIONE

PIÙ  
[piano integrato urbano]

## Piu - Integrated Urban Plan 2022-2026

NRRP – Integrated Urban Plans - M5 C2, I2.2.

Accessibility of City Libraries as centres of cultural production and cultural education, social inclusion and active citizenship

**EUR 113,195 ml of which EUR 8.5 ml for furniture and equipment and two new Bibliobuses**

Energy efficiency and site security

Redesigning urban space (gardens, squares, etc.) around and near the City Libraries

Strengthening and expanding the services of branch libraries

Automation and digitalisation of all processes

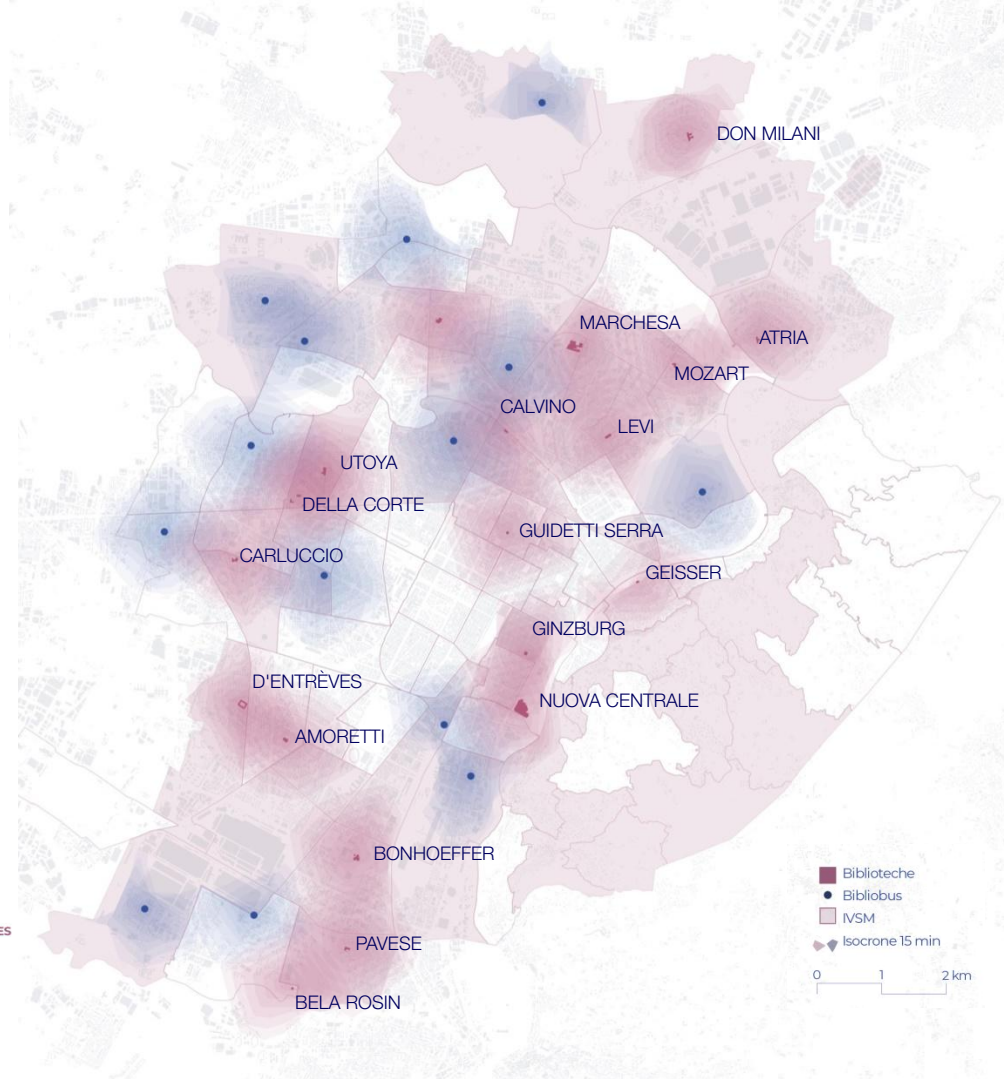
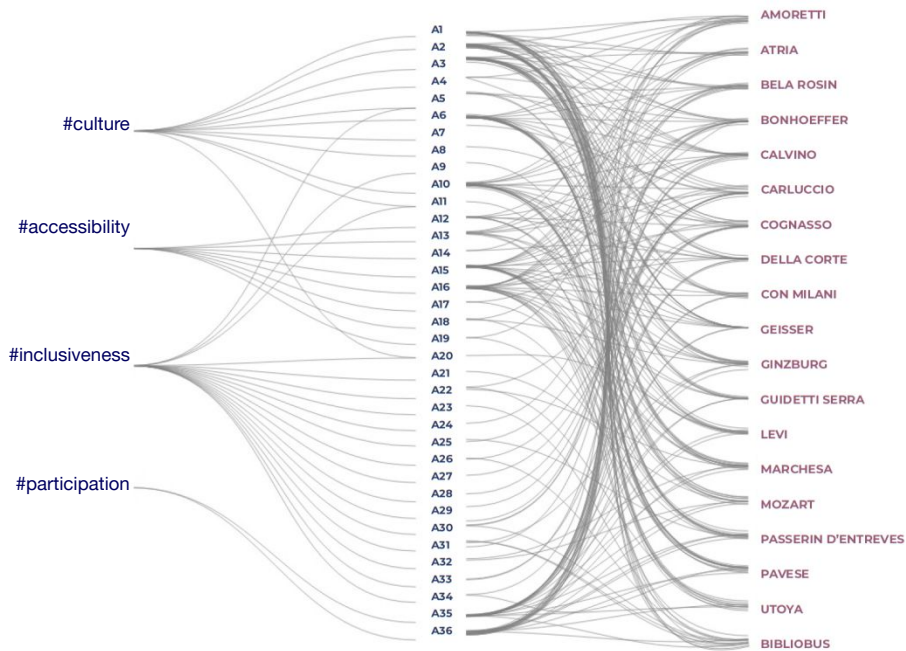
Setting up of two new Bibliobuses

Setting up of the new Alberto Geisser headquarters (refurbished with PON Metro 2014-2021 funds) and opening of a new branch Public Library in District 5

**Support in the start-up phase:** “Next Generation We” call for proposals by Compagnia di San Paolo Foundation *BiblioLab*. *For a 15-minute Torino* to rethink the roles and functions of branch libraries, assigned to the Poa Sustainable Development Company.

# Twenty-five hubs for the culture of proximity

- 16 libraries
- 9 Bibliobus stops





# Which strategic measures for the reorganisation of the Urban Library System in the context of urban regeneration processes?

## **Bibliolab. For a 15-minute Torino**

Public and non-public needs analysis

Stakeholder interviews

Designing services

Focus groups with staff and audience (under 35)

Three prototypes of branch libraries in process of being defined

Converging actions with Urban Regeneration, Public Green and Youth Service of the City of Torino

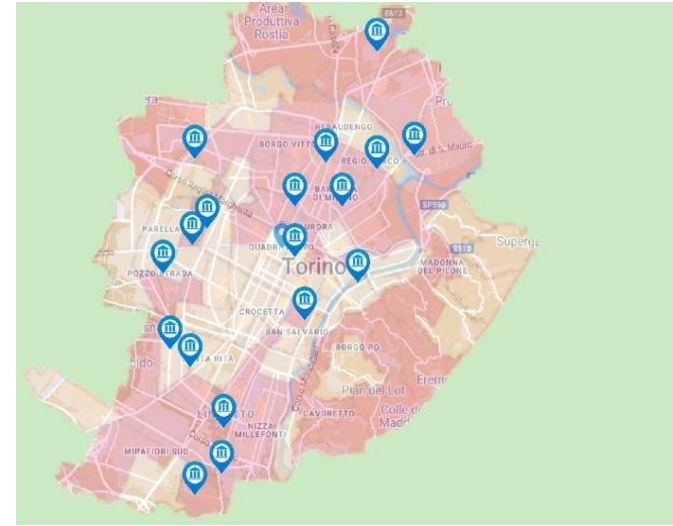
## **Reorganisation of the library system**

Review of the organisation chart and cross-cutting groups

## **Social accompanying and facilitation of citizens' participation**

Three areas: Districts 2 - 8 / Districts 3 - 4 - 5 / Districts 6 - 7

Building a direct and constant relationship between library branches and citizens, **by reconfiguring itself as a reception, listening and information centre. Organisation of meetings and inspections with inhabitants and stakeholders by activating co-design and socio-cultural animation paths. Coordinated management of actions under the Integrated Urban Plan; monitoring and evaluation. Integration with other City programmes, services and initiatives.**



# Two new Bibliobus

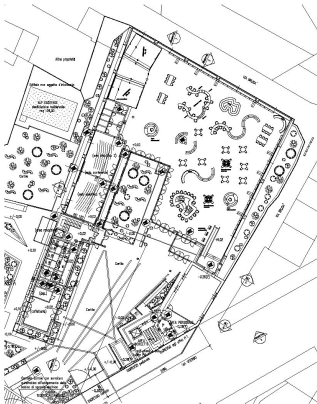
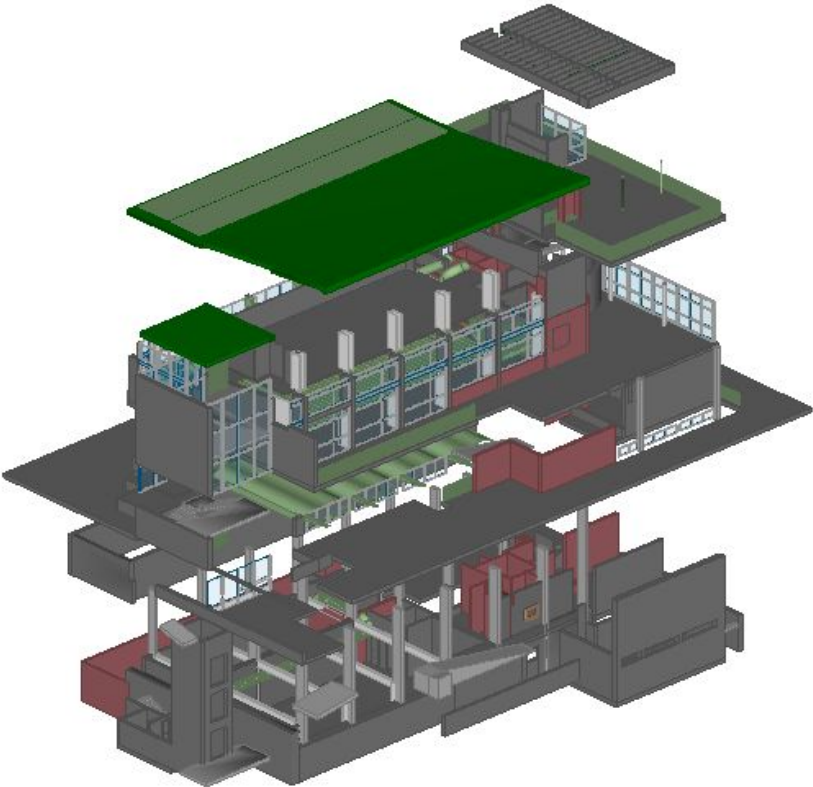
A Bibliobus with enhanced functions (information, civic services)

A Bibliobus designed for children and families to be used mainly in green areas (parks and gardens)





# Alberto Geisser City Branch Library and new Library in District 5



*2016 – 2023*

**Torino Esposizioni: from Feasibility Study to Design  
Guidance Document to technical-economic Feasibility  
Project**



# Torino and its river “memory and future”: the Torino Esposizioni building complex



A complex of buildings and green areas located within the Valentino Park, along the western bank of the river Po, Torino Esposizioni is an example of architecture and structural engineering built between the late 1930s and early 1960s (Ettore Sottsass and Pierluigi Nervi). It is no coincidence that perhaps the most representative pavilion, the Nervi Pavilion, will become the new Torino Central Library (pavilions 2, 2b e 4).

The project also includes improvements to the green area, the Teatro Nuovo, the Borgo Medievale and is financed by the NRRP - Complementary Fund

Contracting Authority: SCR Piemonte SpA. Professional grouping: ICIS srl – group leader RTP ICIS Srl (mandatee) – Arch. Rafael MONEO – ISOLARCHITETTI Srl – Ing. Giovanni Battista QUIRICO – ONLECO Srl – MCM INGEGNERIA Srl (principals).

Library project by Professor Maurizio Vivarelli.

The Politecnico di Torino is also involved in the complex with its own funds (halls 1 and 3) for the construction of classrooms, laboratories, study rooms.



CITTA' DI TORINO





# Current projects for the Library System and the new Torino Central Library

**Collections at the centre: evaluation and valorisation of historical and contemporary collections from an integrated and systemic perspective: University of Torino, Department of Historical Studies.**

**Reading&Machine:** use of artificial intelligence and augmented reality technologies to enhance and enrich the reading experience:

**SmartData@PoliTO** and [VR@Polito](#) Centres, winners of the TIM Foundation Call for Proposals.

**Nourishing culture 0-6. From Milleculle to a System project embracing health, social, education.**

Increasing the number of households reached with CCW proximity actions, **Abbonamento Musei, Torino Museum Foundation, Rete delle Case del quartiere, Fondazione Paideia, Area Onlus, Asl Città di Torino**

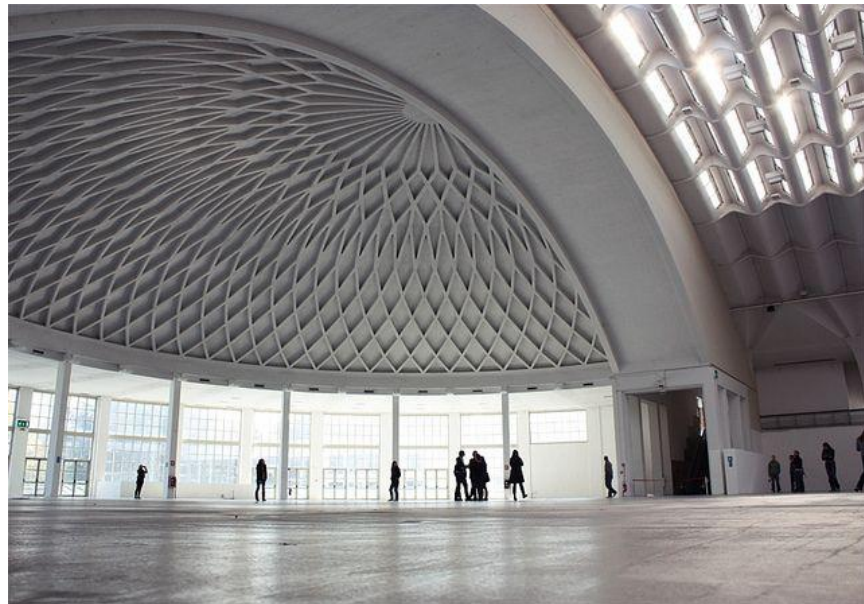
**Integration between SBU e Sham – Metropolitan Area Library System for services and activities**





## The Torino Esposizioni building and the City Central Library

Contracting Authority: **SCR Piemonte SpA**. Professional grouping:  
**ICIS srl** – group leader RTP ICIS Srl (mandatee) – Arch. **Rafael MONEO** – **ISOLARCHITETTI Srl** – Ing. **Giovanni Battista QUIRICO** – **ONLECO Srl** – **MCM INGEGNERIA Srl** (principals)



Finanziato  
dall'Unione europea  
NextGenerationEU





# The New Torino Central Library



Contracting Authority: **SCR Piemonte SpA**. Professional grouping: **ICIS srl** – group leader RTP ICIS Srl (mandatee) – Arch. Rafael MONEO – ISOLARCHITETTI Srl – Ing. Giovanni Battista QUIRICO – ONLECO Srl – MCM INGEGNERIA Srl (principals)



# The New Torino Central Library: hashtag

#accessible

#inclusiveness

#digital

#participatory

#sustainable

#memory and contemporary

#linked to the book and reading supply chain

#connected to other city and branch libraries

#integrated with urban space and green area

#representing the City

#connected with University and Polytechnic

# The New Torino Central Library

Two entrances:

- corso Massimo d'Azeglio
- Valentino Park

to ensure maximum accessibility to the facility and a permanent connection to the green area.

The Rotonda area will be dedicated to the space *Crescere con i libri* (Growing up with books) for the 0-6 age group.

The Portico, accessible 24/7, will be a space in connection with the Library, the conference room, the cafeteria area and the Bookshop and will provide a showcase for the city.

- The City that changes
- The Library that tells its own story



Contracting Authority: SCR Piemonte SpA. Professional grouping: ICIS srl – group leader RTP ICIS Srl (mandatee) – Arch. Rafael MONEO – ISOLARCHITETTI Srl – Ing. Giovanni Battista QUIRICO – ONLECO Srl – MCM INGEGNERIA Srl (principals). Library project by Professor Maurizio Vivarelli

The image shows a vast, multi-level library interior. The most striking feature is the ceiling, which consists of a complex, white, ribbed structure that resembles a large, open book or a series of overlapping planes. The space is filled with wooden bookshelves, study tables with chairs, and a central courtyard area with young trees. People are seen walking and sitting, giving a sense of scale and activity. The lighting is bright and even, highlighting the architectural details.

**«The Library is indeed a symbol and reality of a collective memory»**

**Umberto Eco**



# The New Central Library Vision

## Combination of architectural, cultural and library space

**Storytelling of the spaces and functions of the new Library.**

**Intuitive naming: Galleria del Sapere (Knowledge Gallery), Teche/Imparare & Fare (Thecas /Learn & Do), Via delle Storie (Street of Stories), Crescere con i libri (Growing up with books), Bosco incantato (Enchanted wood - gaming and immersive environments), Macchina della memoria (Memory machine),** in line with the aesthetic and architectural suggestions of the Torino Esposizioni building, it is an essential element for the creation of a shared imaginary, in order to give new value to one of the most significant architectural complexes of the 20th century.

# Vision in Library Space

**Spaces and services for reading and lifelong learning** (workshops, seminar rooms, makerspace)  
Galleria del Sapere (Knowledge Gallery), Crescere con i libri (Growing up with books), and  
Teche/Imparare & Fare (Thecas /Learn & Do)

**Spaces for collaborative, workshop and participatory co-production of content**(music  
production, gaming, etc.) Il Bosco incantato (Enchanted wood)

**Innovative organisation of contemporary, historical and special collections**

Macchina della Memoria (Memory machine), Galleria del Sapere (Knowledge Gallery), Via delle storie  
(Street of Stories)

**Project Mentoring: «Next generation we» Call of Proposals by Compagnia di San Paolo Foundation**  
(digital project, service design, participatory design, project management)

*The New Torino Central Library. A cultural project for the City for the new generations of the  
present and future*

**Internationally**  
**inspired**  
*guidelines*





'Enriched', 'narrative', 'fluid' shelves.

Left: furniture from the Oodi Library in Helsinki



**Growing up with books (Thionville)**



**makers space...**





**the 'memory machine' of the Thomas Jefferson Library**





**Gaming...**

**... Virtual Reality**



# The New Central Library: dimensional data

- 20,000 mq
- 150,000 open-shelf documents
- 600,000 documents in storage
- Networking and sorting centre
- 40,000 documents in the area dedicated to the enhancement of the historical collections
- 700 traditional seating and 700 informal seats
- Spaces for children, youth, training and creation (laboratories, coworking, makerspace), for gaming, music and multimedia production, immersive spaces
- Cafeteria/ bookshop, low definition spaces

# **ARCHITECTURAL DESIGN CONCEPT**

# TECHNO-ECONOMIC FEASIBILITY PROJECT

New headquarters for the Torino Public Library  
*Services conference\_10-01-2023*

## RTP PROGETTAZIONE

ICIS S.r.l. (group leader)

Arch. Rafael Moneo (principal)

Isolarchitetti S.r.l. (principal)

MCM Ingegneria (principal)

Onleco S.r.l. (principal)

Ing. Giovanni Battista Quirico (principal)



# - DESIGN CONCEPT -

CURRENT STATUS



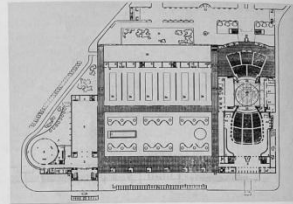
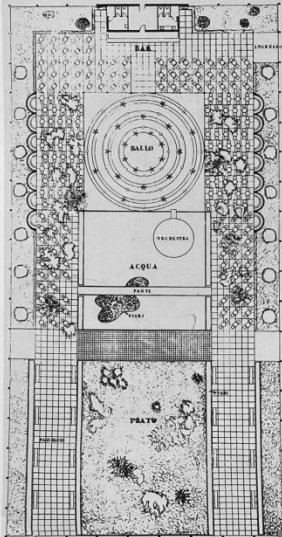
URBAN PLACEMENT

# - DESIGN CONCEPT -

## TORINO ESPOSIZIONI BUILDING - HISTORY

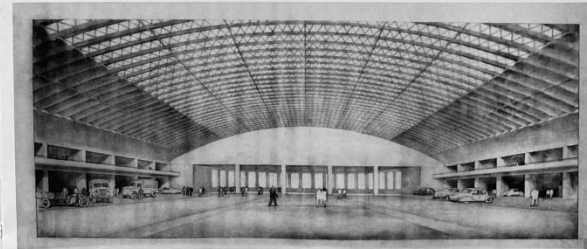
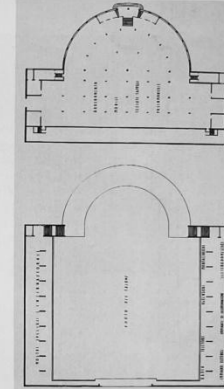
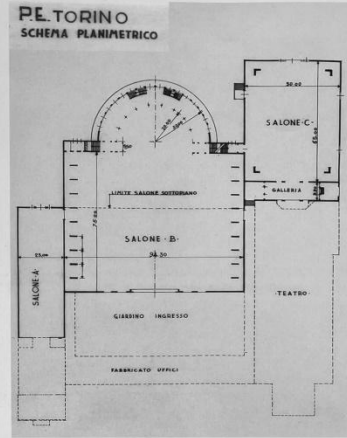


ARCHITETTO ETTORE SOT-SAS:  
IL GIARDINO DELLE DANZE NEL  
PALAZZO DELLA MODA A TORINO



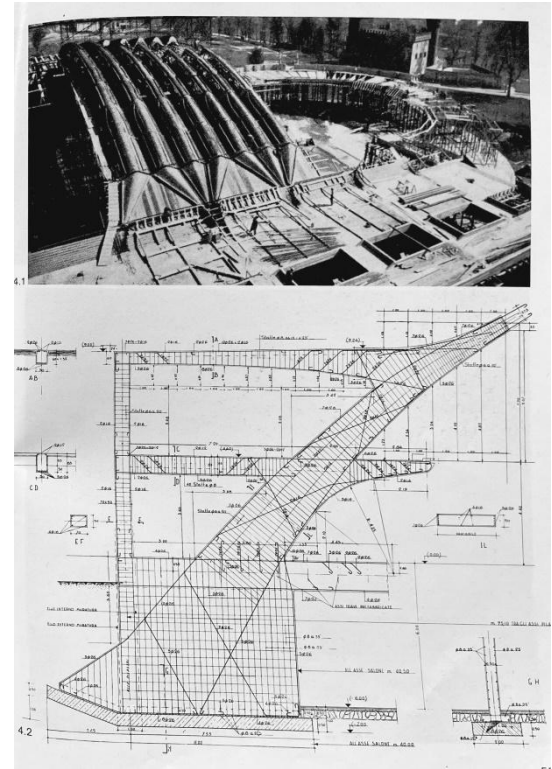
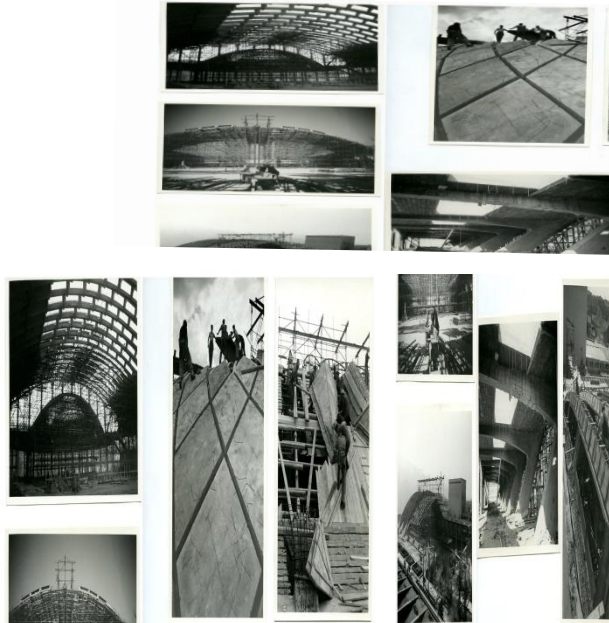
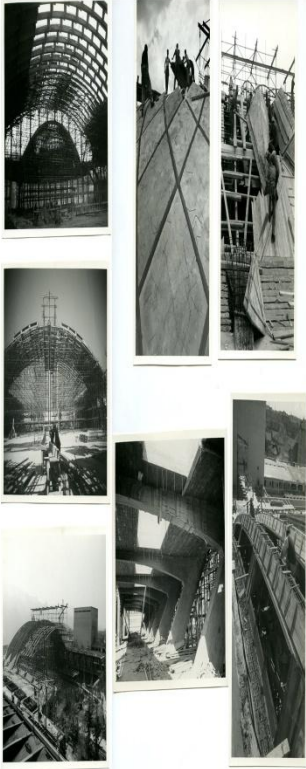
Pagina sinistra  
2 Palazzo della Moda al Valentino di Ettore Sottsass, plastico  
3 Idem 2, vista del giardino delle danze  
4 Idem 2, pianta  
5 Pianta del giardino delle danze  
6 Il nuovo Palazzo delle Esposizioni, plastico

Pagina destra  
7 Idem 6, pianta piano terra  
8 Idem 6, pianta piano interrato e pianta piano galleria  
9 Idem 6, prima soluzione, vista prospettica



# - DESIGN CONCEPT -

## TORINO ESPOSIZIONI BUILDING - HISTORY



**- DESIGN CONCEPT -**  
TORINO ESPOSIZIONI BUILDING - HISTORY



INAUGURATION 1948 - VIEW FROM OUTSIDE



**- DESIGN CONCEPT -**  
TORINO ESPOSIZIONI BUILDING - HISTORY



INAUGURATION 1948 - INTERIOR SPACE

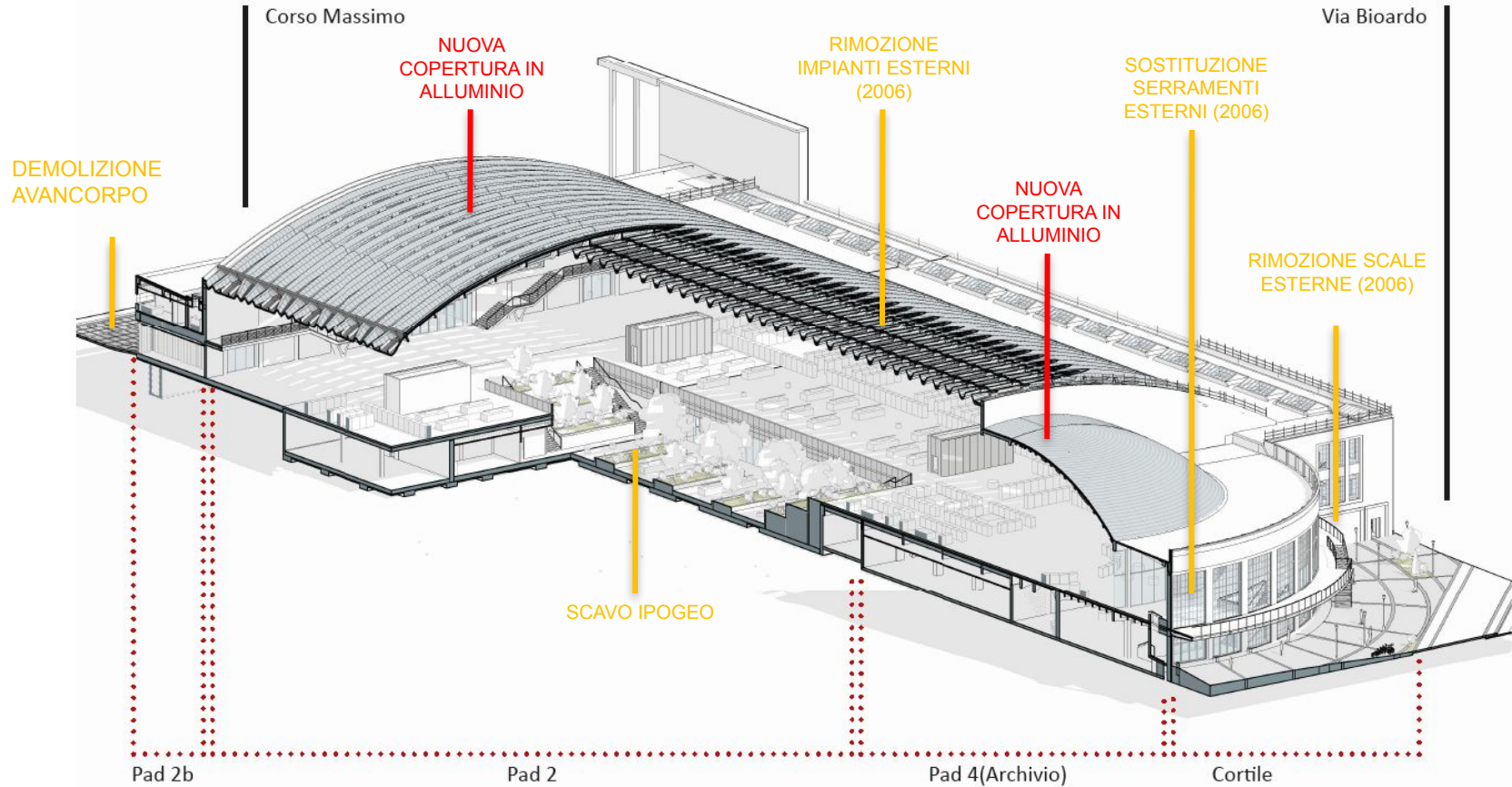
# - DESIGN CONCEPT -

## TORINO ESPOSIZIONI BUILDING - HISTORY



# - DESIGN CONCEPT -

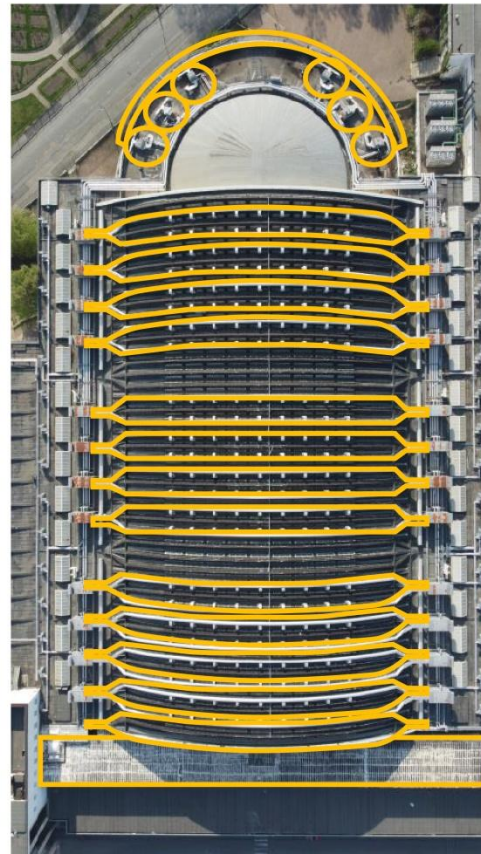
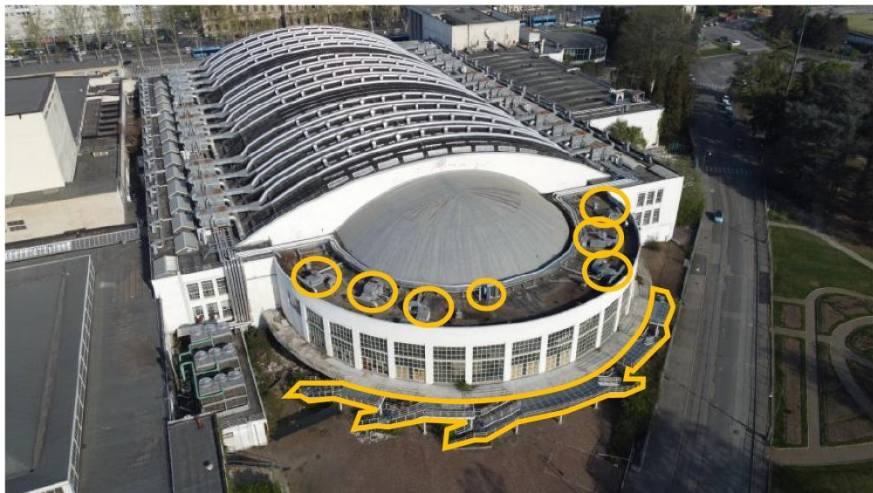
ARCHITECTURAL DESIGN





# - DESIGN CONCEPT -

CURRENT STATUS

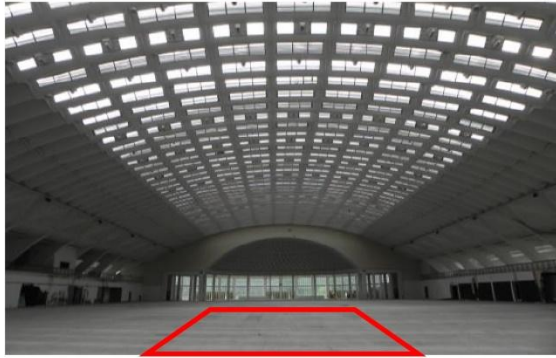


INVOLUCRO ESTERNO



# - DESIGN CONCEPT -

CURRENT STATUS



INVOLUCRO ESTERNO


# - DESIGN CONCEPT -

## ARCHITECTURAL DESIGN

### SUPERFICI:

 SPAZIO APERTO AL PUBBLICO

19380 mq

 ARCHIVIO E LOGISTICA *2030 mq*  
UFFICI *1145 mq*

3175 mq

 BALCONATA ESTERNA

479 mq

 AREE VERDI (PATIO INTERNO,  
ROOF GARDEN, CORTE VERSO IL PARCO)

2379 mq

### ARREDI:

- Sedute informali (poltrone, sedute lab incontri,  
ecc...) **762**

- Sed studio **707**

- postazioni ufficio **50**

- postazioni bibliotecari front office **20**

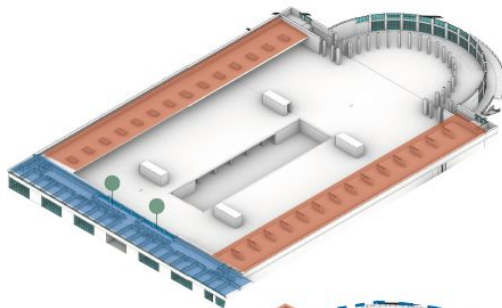
### LIBRI:

- libri accessibili al pubblico:

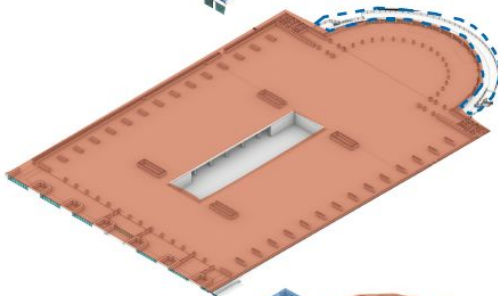
**246 440** vol di cui **29 600** del fondo storico

- non accessibili (archivio)

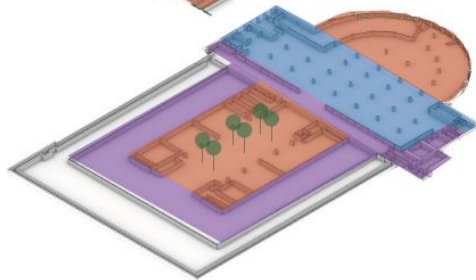
**678 720**



PIANO PRIMO



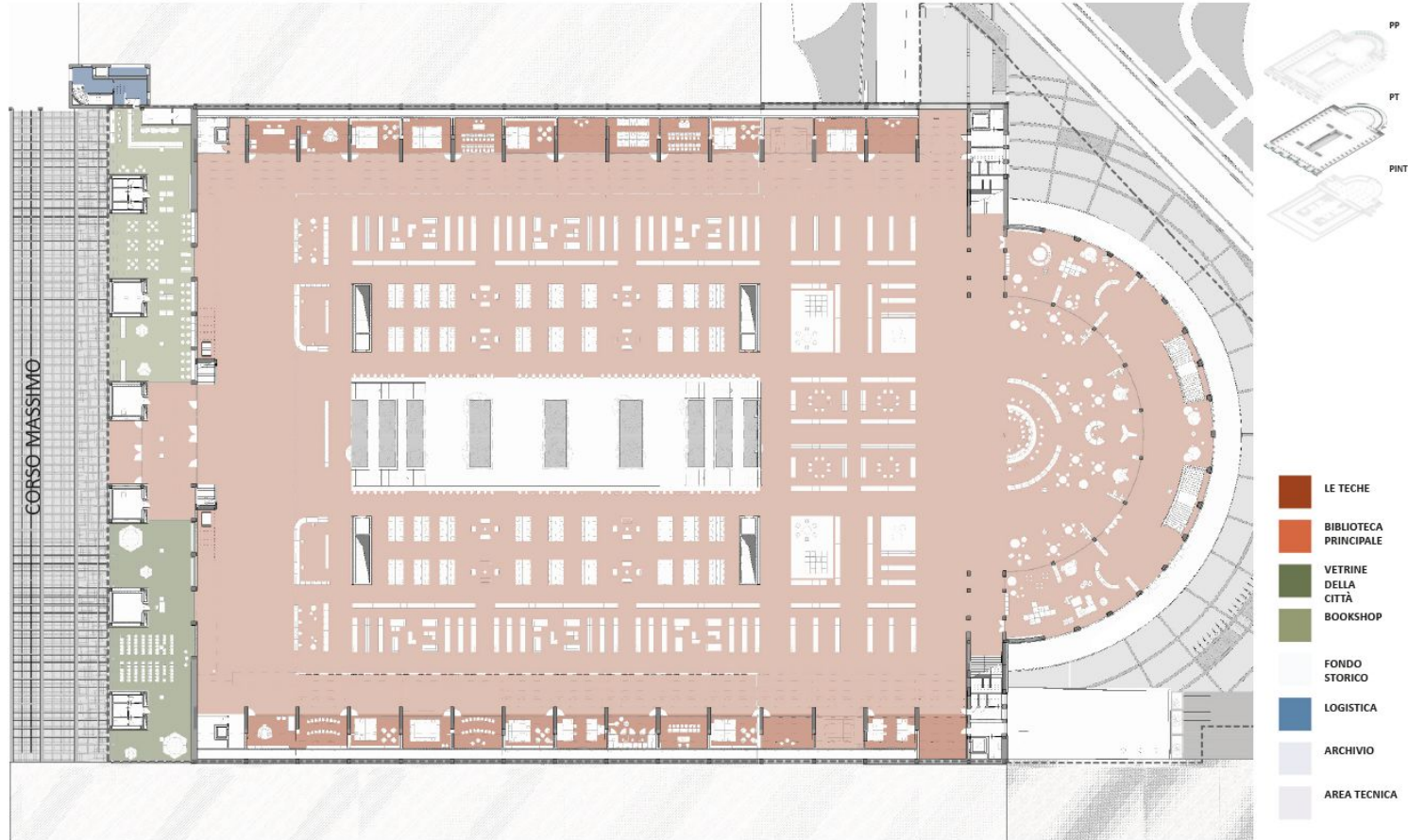
PIANO TERRA



PIANO INTERRATO

# - DESIGN CONCEPT -

ARCHITECTURAL DESIGN

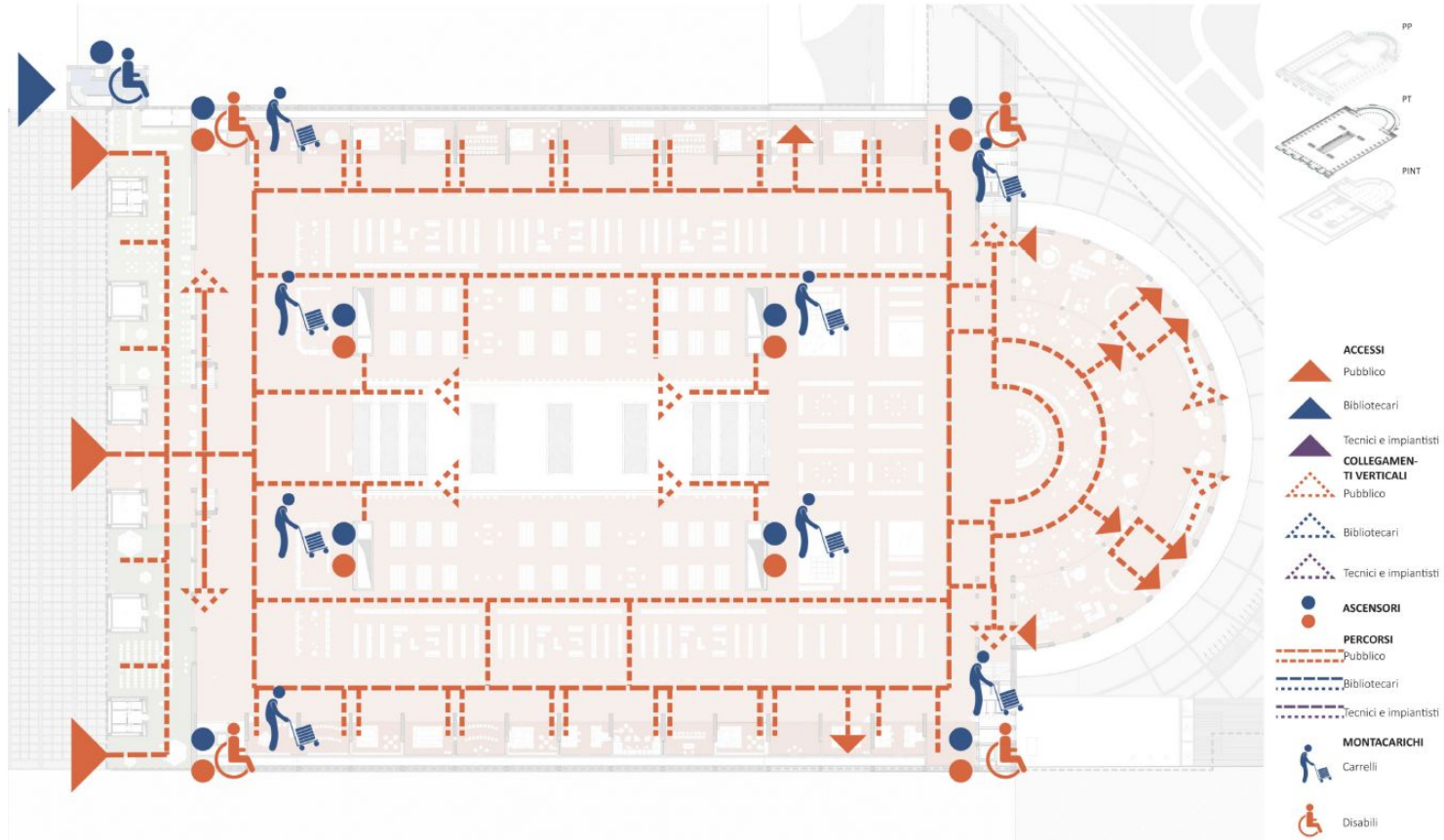


LAYOUT – GROUND FLOOR



# - DESIGN CONCEPT -

## ARCHITECTURAL DESIGN



LAYOUT – GROUND FLOOR DISTRIBUTION SCHEME / ACCESSES

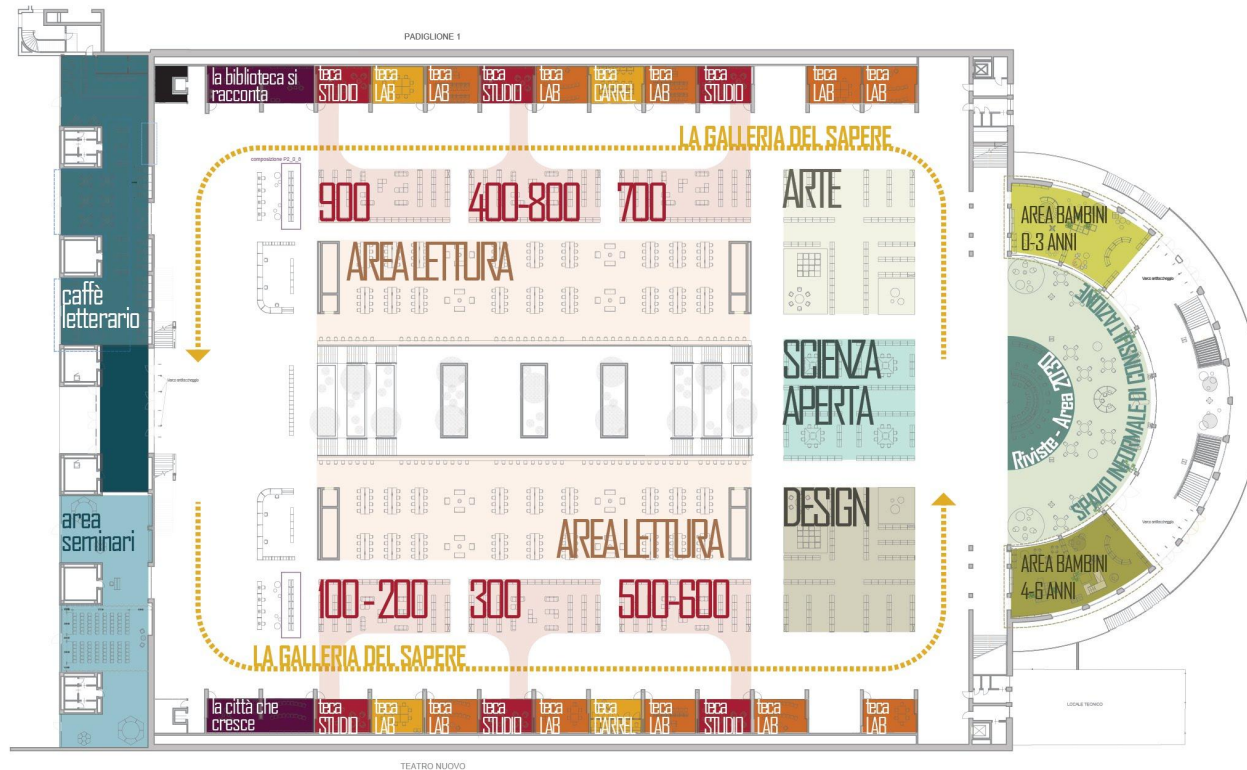
# - DESIGN CONCEPT -

ARCHITECTURAL DESIGN

PORTICO

LA GALLERIA DEL SAPERE

ROTONDA



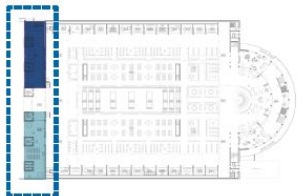
PADIGLIONE 1

TEATRO NUOVO

LAYOUT – GROUND FLOOR SET-UP DIAGRAM

# - DESIGN CONCEPT -

## ARCHITECTURAL DESIGN



### PORTICO

spazio filtro di dialogo  
continuo tra biblioteca e città

#### PRINCIPI BASE

- **bilanciamento** dell'arredo tra la neutralità materica con arredi effetto legno e colorazione per arredi informali come sedute imbottiti;
- sedute nell'area conferenze impilabili per **configurazioni flessibili** dello spazio
- arredi con **elevata resistenza meccanica**, imbottitura facilmente lavabile e in Classe 11M, trattamento antibatterico e test dei Martindale > 100.000 lavaggi



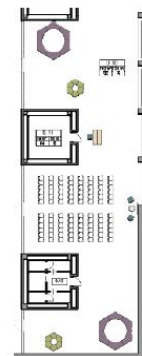
### IL CAFFÈ LETTERARIO

Spazio di incontro tra la città e la biblioteca, tra lettura e socialità.



### LO SPAZIO INCONTRI

Area dedicata a incontri e seminari di dialogo tra la città e i suoi abitanti





**- DESIGN CONCEPT -**  
ARCHITECTURAL DESIGN



RENDER - VIEW OF THE CAFÉ/BOOKSHOP ( PAVILION 2B)

# - DESIGN CONCEPT -

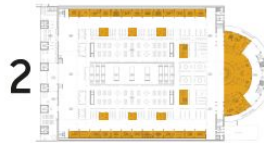
## ARCHITECTURAL DESIGN

### GALLERIA DEL SAPERE

spazio contenitore di conoscenza



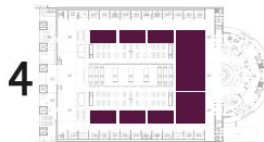
Suddivisione dei flussi in navate ed esaltazione prospettica dell'orizzontalità



Bilanciamento dell'arredo tra:  
- arredo strutturale neutro  
- arredo informale colorato



Percorso anulare per la consultazione libraria



Suddivisione degli argomenti in in comparti "stanze tematiche"

### TIPOLOGIA DI ARREDO

ARREDO FUNZIONALE:

**Ruolo strutturale e compositivo**



ARREDO INFORMALE:

**Ruolo comunicativo e sociale**

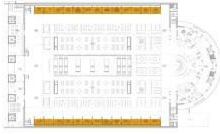


### CARATTERISTICHE:

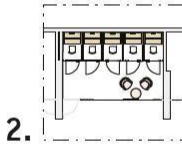
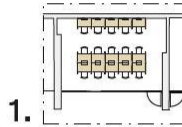
- Classe 1 e Classe 1IM,
- resistenza meccanica, a graffio e alle macchie test di Martin dale >100.000
- arredi impottiti trattamento antimicrobico e

# - DESIGN CONCEPT -

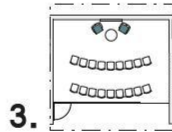
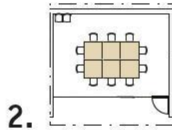
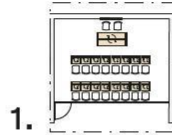
## ARCHITECTURAL DESIGN



### TECA CARRELS



### TECA LAB



### TECA STUDIO



TECHE STUDIO:

- ciscuna teca presenta una **colorazione dell'arredo interno** differente ad indicare una particolare tematica corrispondente all'arred informale nel comparto librario





**- DESIGN CONCEPT -**  
ARCHITECTURAL DESIGN

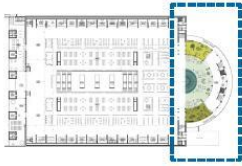


RENDER – PAVILION 2 VIEW



# - DESIGN CONCEPT -

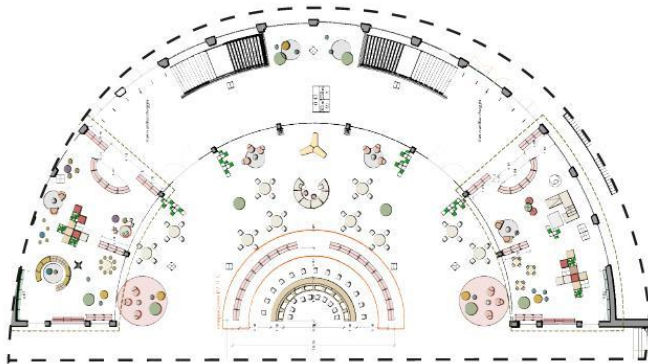
## ARCHITECTURAL DESIGN



## L'ABSIDE

Leggere il presente, immaginare il futuro

La Rotonda innesta la seconda area di ingresso affacciata sul Parco del Valentino. Nella Rotonda saranno resi disponibili circa 300 periodici di natura non specialistica, postazioni di accesso al catalogo, a MLOL, ad Internet, insieme a vetrine e rassegne su argomenti diversi. All'interno della Rotonda è prevista inoltre l'area Le sfide del cambiamento, interamente dedicata ai grandi temi della sostenibilità e del mutamento climatico, ispirata ai principi ed ai valori dell'Agenda 2030 nelle Nazioni Unite,



## EMEROTECA

periodici di informazione generale



## AGENDA 2030

Le sfide del cambiamento



## AREA BAMBINI 0-3 ANNI E 4-6 ANNI

Crescere con i libri





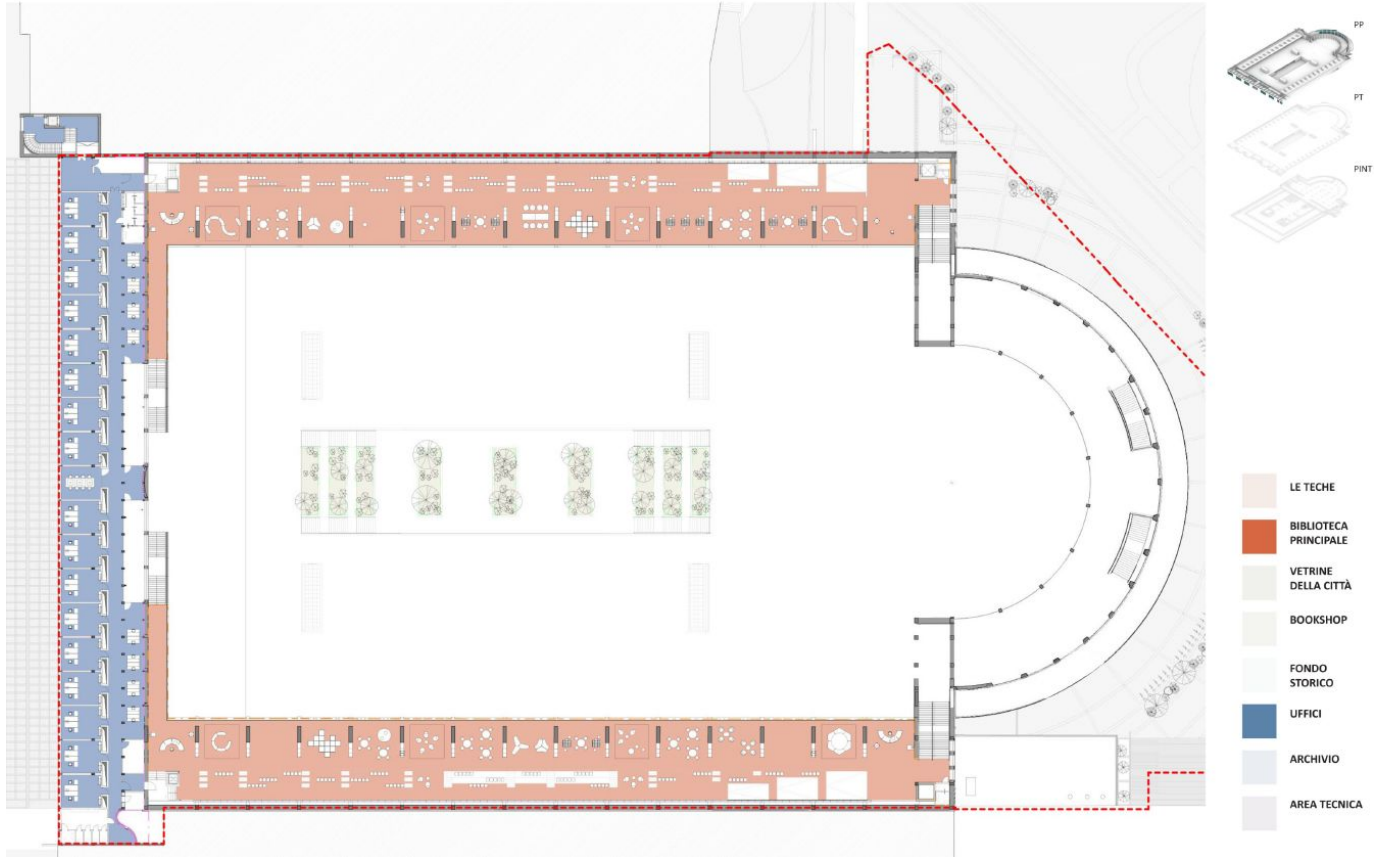
**- DESIGN CONCEPT -**  
ARCHITECTURAL DESIGN



RENDER – VIEW OF THE APSE (CHILDREN'S AREA)

# - DESIGN CONCEPT -

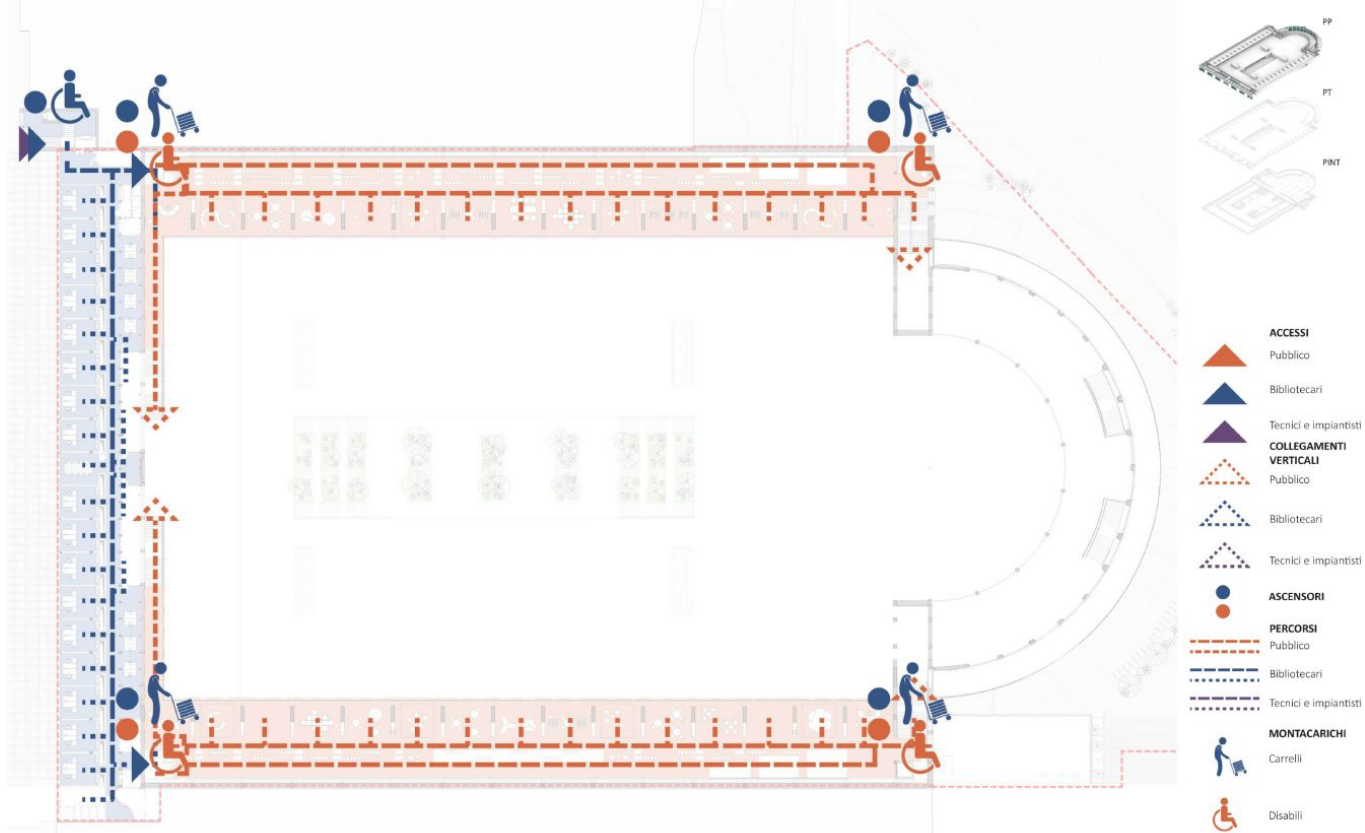
## ARCHITECTURAL DESIGN



LAYOUT - FLOOR-1 FUNCTIONS

# - DESIGN CONCEPT -

## ARCHITECTURAL DESIGN

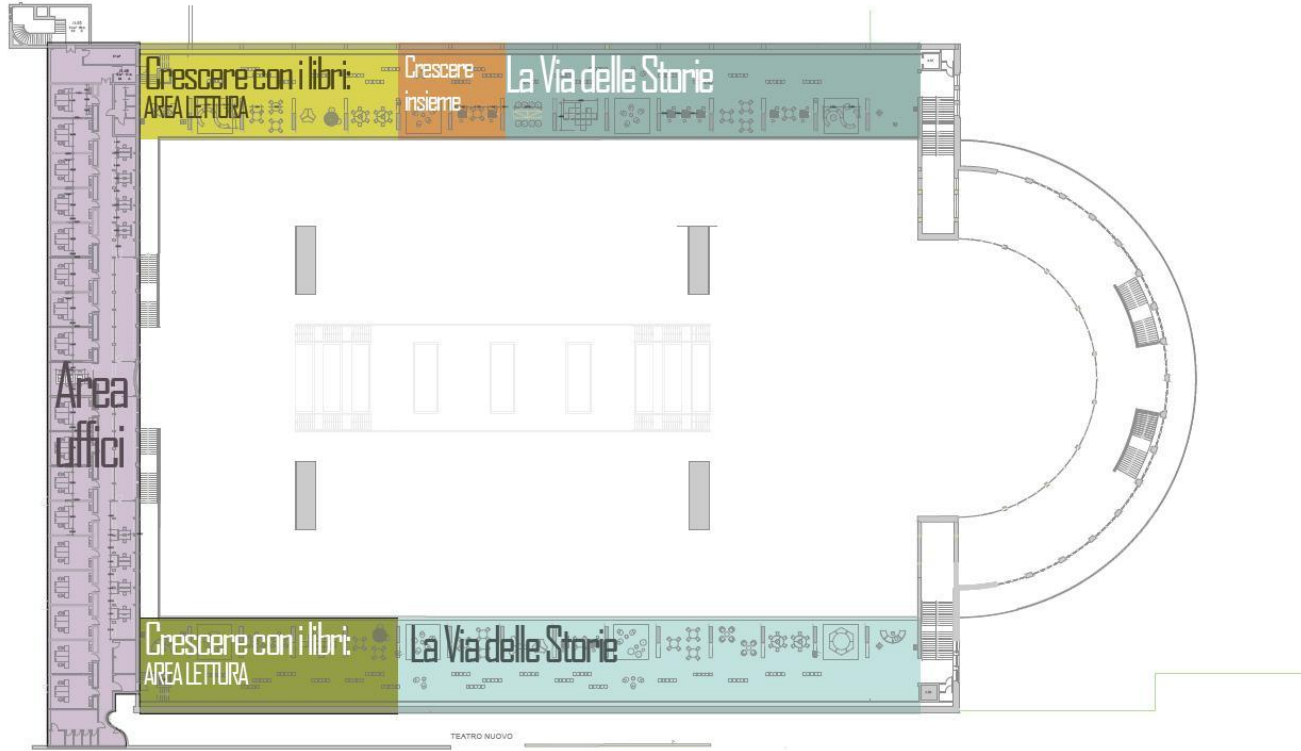


LAYOUT - FLOOR-1 DISTRIBUTION SCHEME / ACCESSES



# - DESIGN CONCEPT -

ARCHITECTURAL DESIGN



LAYOUT – FLOOR-1 SET-UP DIAGRAM

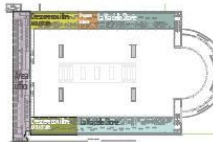
# - DESIGN CONCEPT -

## ARCHITECTURAL DESIGN

### LE TERRAZZE e GLI UFFICI

Collocati al piano primo in affaccio alla biblioteca:

- aree ragazzi Crescere con i libri;
- La Via delle Storie, sono disposte, e rese agevolmente fruibili, circa 20.000 unità documentarie;
- 15.000 opere di fiction ordinate in base al genere (fantascienza, gialli, romanzi sentimentali etc.), fumetti e graphic novel, circa 5.000 CD, DVD, dischi in vinile, con un'ampia selezione di audiolibri.



### AREA RAGAZZI 7-10 e 11-14

Spazio di incontro tra giovani e di formulazione di un nuovo approccio alla biblioteca.



### AREA MULTIMEDIALE

Spazio di lettura e ascolto informale



### UFFICI

Uffici amministrativi e di segreteria



**- DESIGN CONCEPT -**  
ARCHITECTURAL DESIGN



RENDER – BALCONY VIEW (CHILDREN'S AREA)



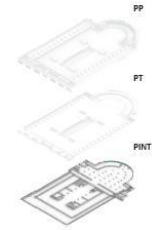
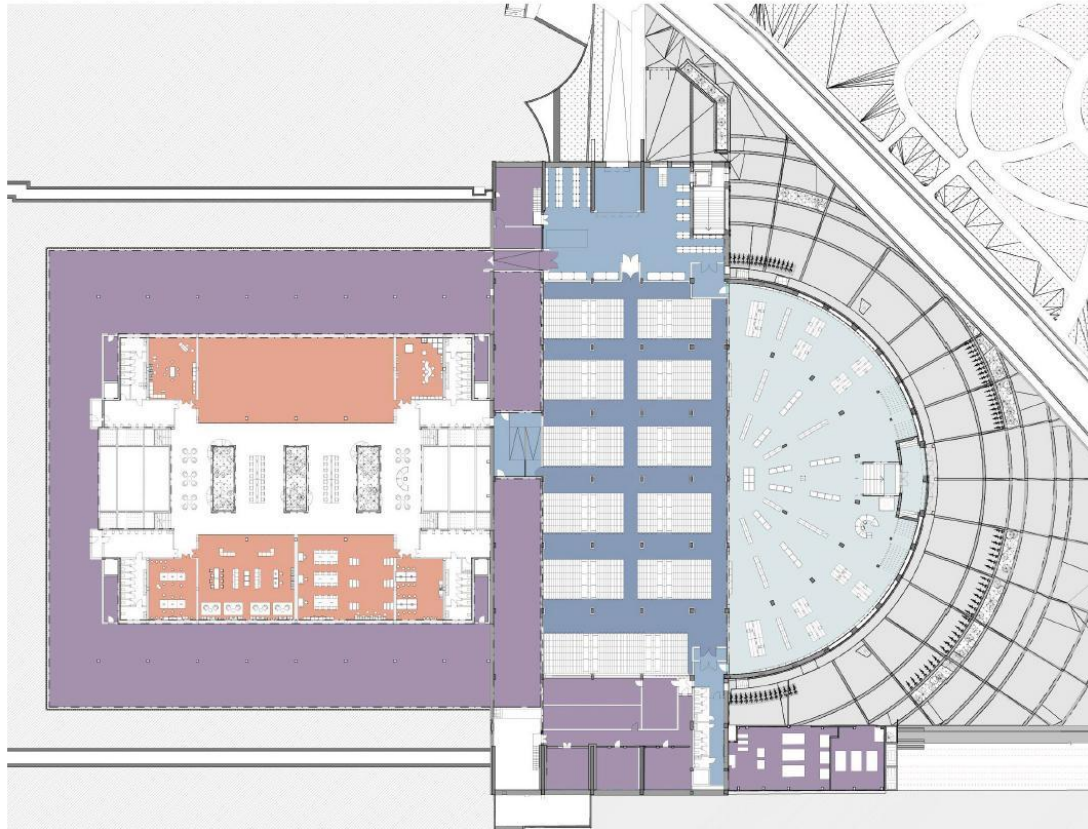
**- DESIGN CONCEPT -**  
ARCHITECTURAL DESIGN



RENDER – ROOF GARDEN VIEW (OFFICE AREA)

# - DESIGN CONCEPT -

ARCHITECTURAL DESIGN

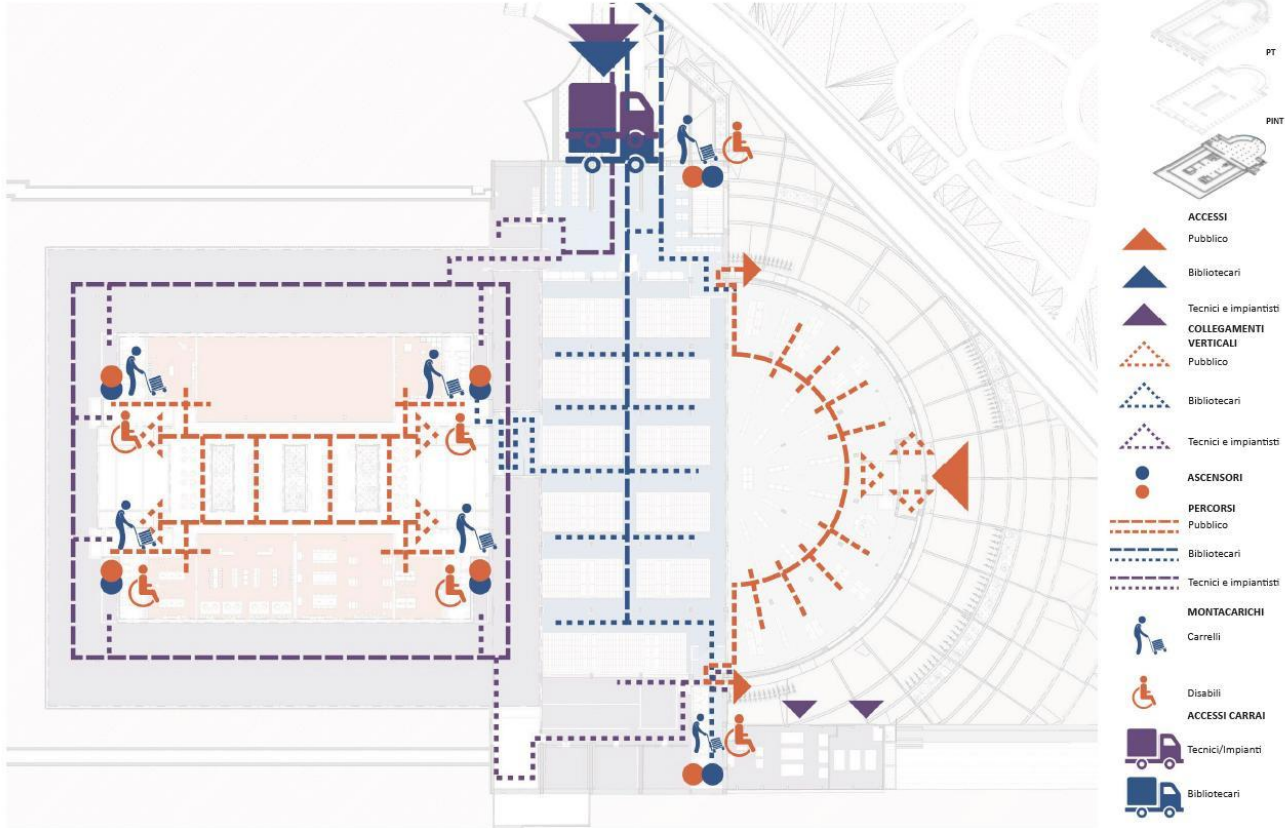


- LE TECHE
- BIBLIOTECA PRINCIPALE
- VETRINE DELLA CITTÀ
- BOOKSHOP
- FONDO STORICO
- UFFICI
- ARCHIVIO
- AREA TECNICA

LAYOUT – FLOOR -1 FUNCTIONS

# - DESIGN CONCEPT -

## ARCHITECTURAL DESIGN



LAYOUT – FLOOR -1 ACCESSIBILITY



# - DESIGN CONCEPT -

ARCHITECTURAL DESIGN



LAYOUT – FLOOR -1 SET-UP DIAGRAM



# - DESIGN CONCEPT -

## ARCHITECTURAL DESIGN



### LA MACCHINA DELLE MEMORIA

Area dedicata alla collocazione di circa 40.000 unità delle collezioni storiche e speciali;  
In questa sezione della biblioteca, oltre alle rilevanti funzioni tecniche e gestionali, sono localizzate le fondamentali attività e servizi di conservazione, ordinamento, comunicazione del patrimonio documentario storico e speciale, secondo una prospettiva aperta, inclusiva e partecipativa, orientata fortemente a valorizzare con modalità creative ed innovative la comunicazione dei contenuti delle collezioni documentarie.



### ARCHIVIO COMPATTABILI

gestione, organizzazione bibliografica,



### AREA LOGISTICA

i servizi logistici dedicati alla gestione delle collezioni ed al Sistema Bibliotecario Urbano ed ai bibliobus; il magazzino con scaffalature compatte; l'area destinata alle collezioni storiche e speciali.



### IL BOSCO INCANTATO

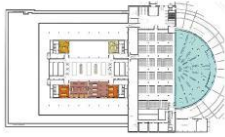
- AREA LETTURA

Il bosco incantato. Organismo che cresce, è una delle aree della biblioteca di maggior efficacia estetica ed emotiva, grazie alla localizzazione degli elementi vegetali in prossimità dei quali sono previsti tavoli e posti a sedere.



# - DESIGN CONCEPT -

## ARCHITECTURAL DESIGN



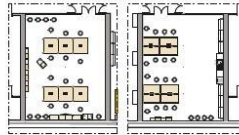
### IL BOSCO INCANTATO

- laboratoriali e di  
produzione e coproduzione  
dei contenuti

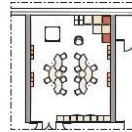
Il bosco incantato. Organismo che cresce, è una delle aree della biblioteca di maggior efficacia estetica ed emotiva, grazie alla localizzazione degli elementi vegetali in prossimità dei quali sono previsti tavoli e posti a sedere.



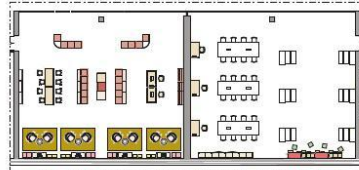
LABORATORIO  
MUSICALE



MAKERSPACE  
CUCINA LAB



AREA  
FAMIGLIE



AREA GAMING  
E VIDEO



**- DESIGN CONCEPT -**  
ARCHITECTURAL DESIGN

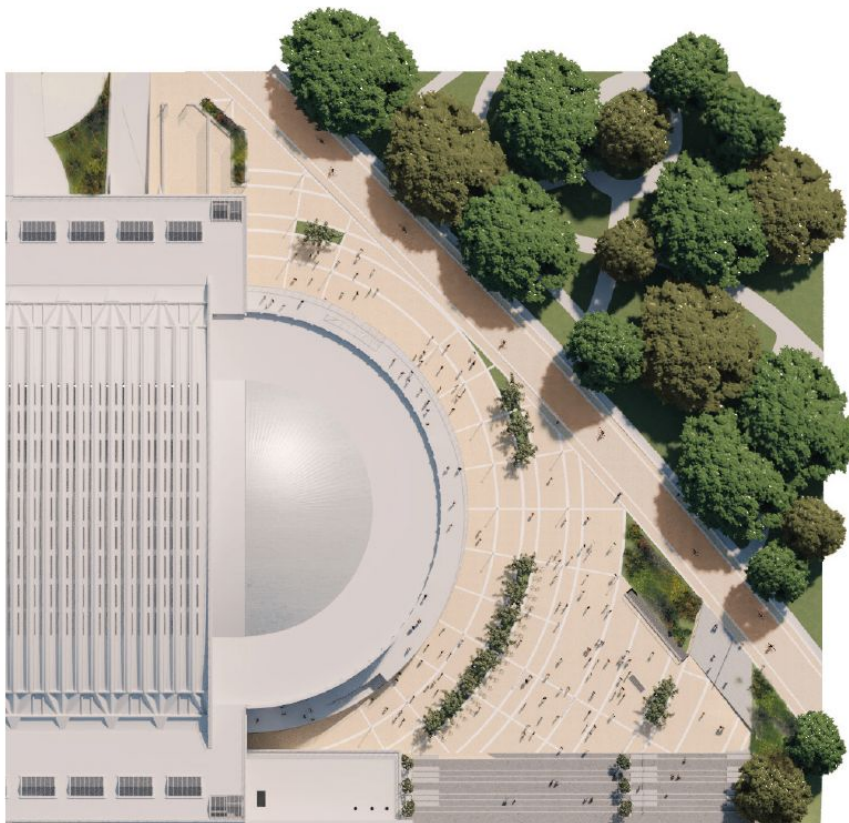


RENDER – UNDERGROUND GREEN PLAZA VIEW



# - DESIGN CONCEPT -

ARCHITECTURAL DESIGN



specie arboree aree esterne (cortile parco Valentino)



Potentilla fruticosa



Viburnum tinus (H50-60, H100-125)



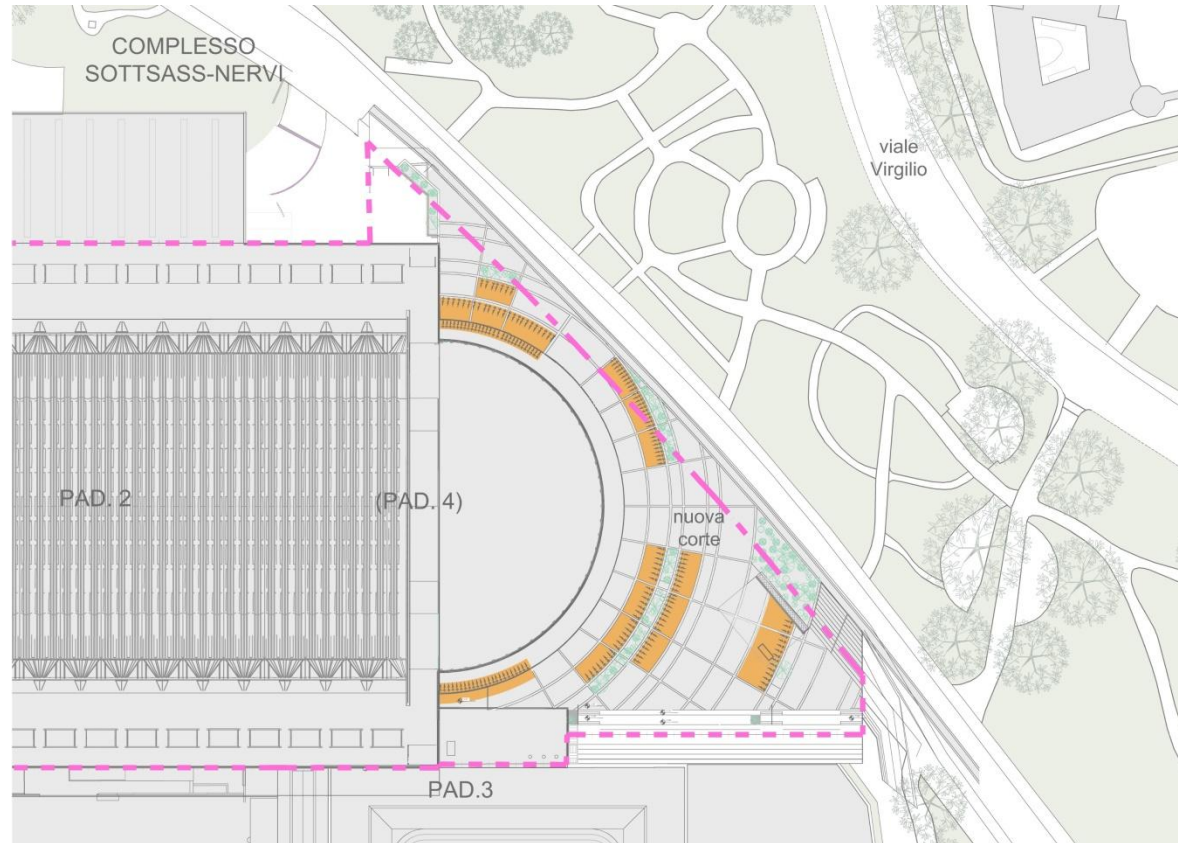
Tilia Cordata

LAYOUT – COURTYARD ON VIALE BOIARDO (VALENTINO PARK)



# - DESIGN CONCEPT -

## ARCHITECTURAL DESIGN



AREA  
POSTAZIONI  
BICI  
565 MQ

LAYOUT – COURTYARD ON VIALE BOIARDO (VALENTINO PARK) – BIKE STATIONS

**- DESIGN CONCEPT -**  
ARCHITECTURAL DESIGN



RENDER – COURTYARD ON VIALE BOIARDO (VALENTINO PARK)

**- DESIGN CONCEPT -**  
ARCHITECTURAL DESIGN



RENDER – EXTERNAL VIEW OF CORSO MASSIMO D'AZEGLIO



**- DESIGN CONCEPT -**  
ARCHITECTURAL DESIGN



RENDER – EXTERNAL VIEW OF CORSO MASSIMO D'AZEGLIO



**- DESIGN CONCEPT -**  
ARCHITECTURAL DESIGN



RENDER – PAVILION 2 VIEW

**- DESIGN CONCEPT -**  
ARCHITECTURAL DESIGN



RENDER – PAVILION 2 VIEW